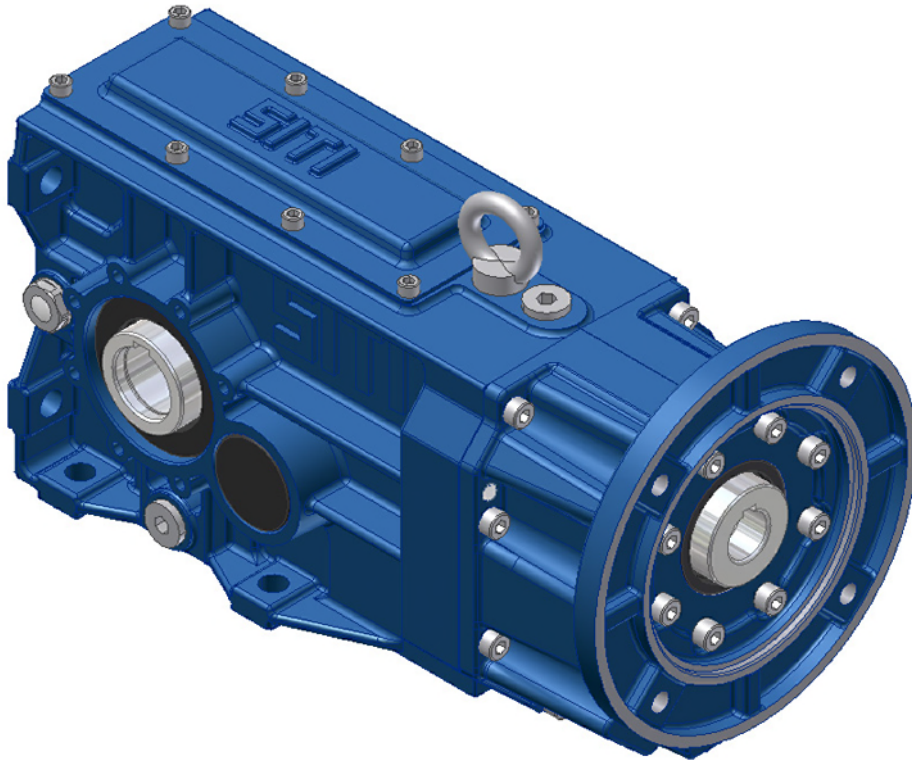
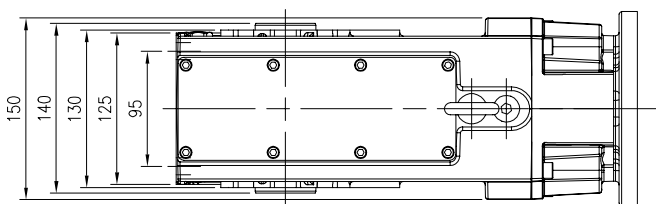
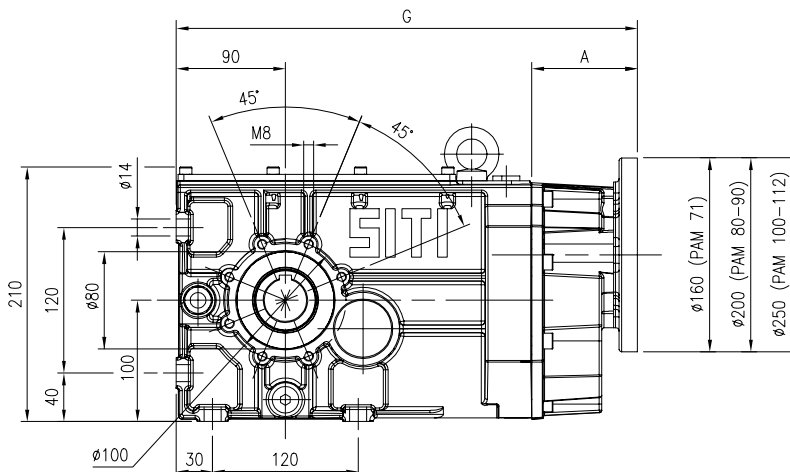
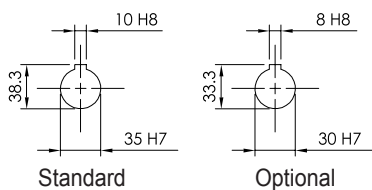
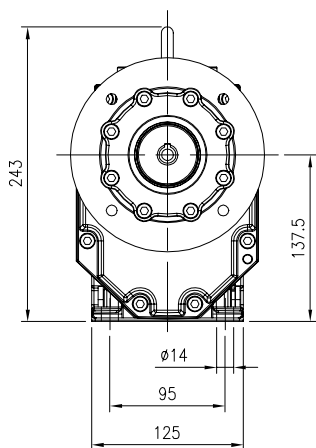


# BH 63

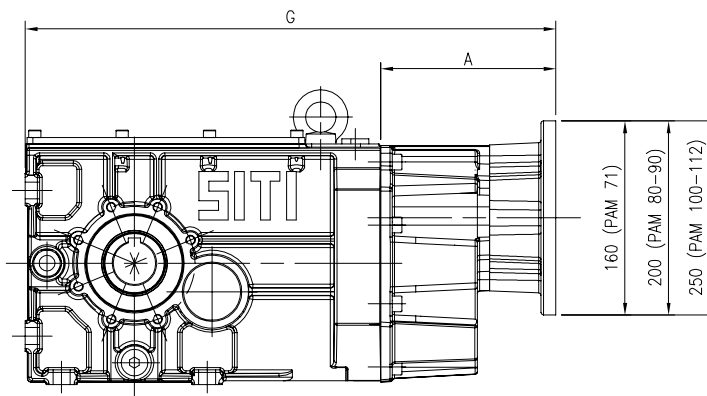
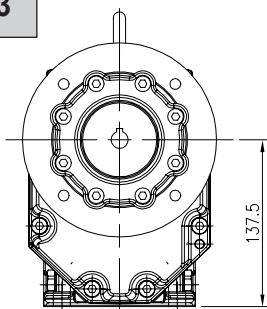


$$M_{2\max} = 450 \text{ Nm}$$

## MBH 63



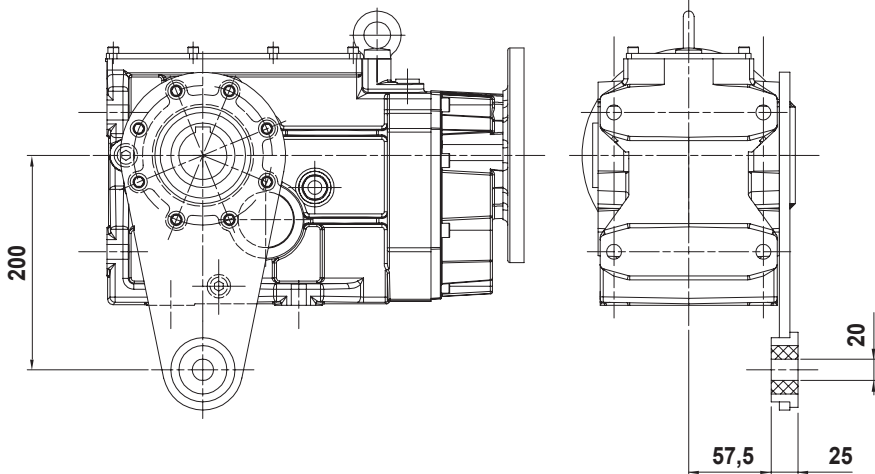
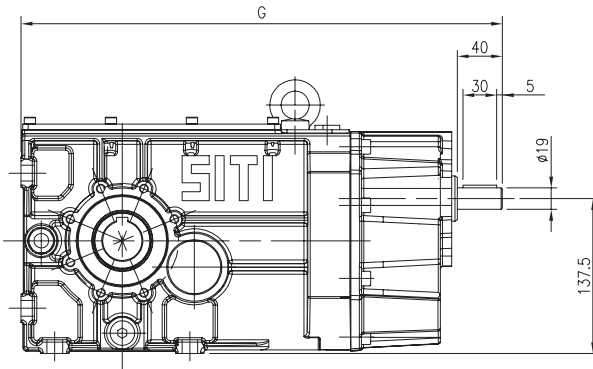
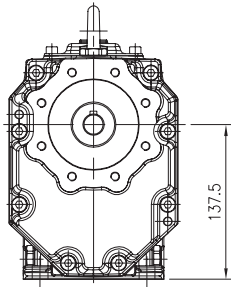
## MBHGC 63



	A	G
BH 63		427,5
MBH63 PAM 71	87	380
MBH63 PAM 80	87	380
MBH63 PAM 90	87	380
MBH63 PAM 100	109,5	402,5
MBH63 PAM 112	109,5	402,5
MBHGC63 GR.71	144	437
MBHGC63 GR.80	144	437
MBHGC63 GR.90	144	437
MBHGC63 GR.100	168	461
MBHGC63 GR.112	168	461

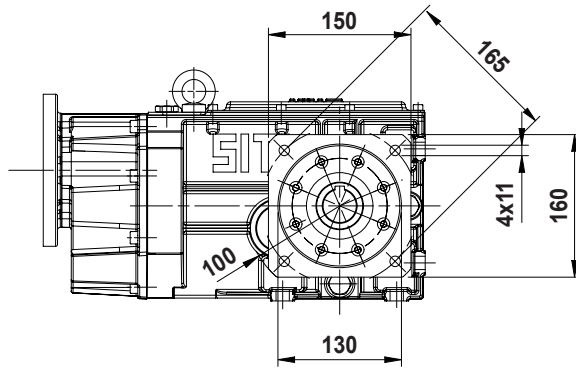
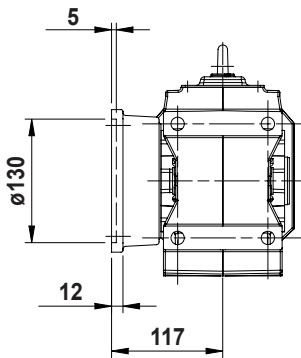
i	MBH					MBHGC				
	71	80	90	100	112	71	80	90	100	112
7,75										
9,05										
10,61										
12,10										
14,13										
16,56										
19,54										
22,24										
33,86										
40,77										
44,17										
52,76										
79,96										
91,45										
96,83										
106,00										
125,03										
149,36										
167,83										
188,44										

## BH 63



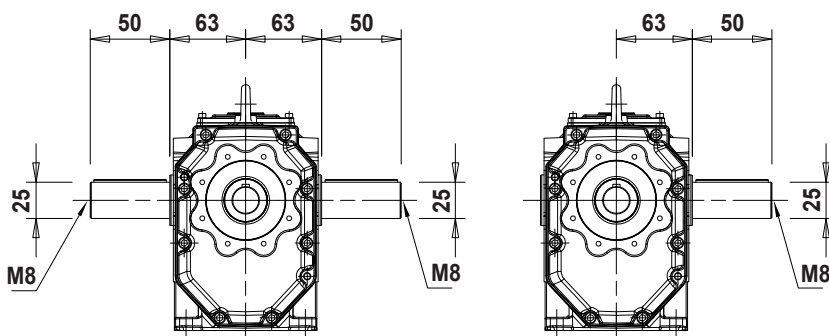
### OPTIONAL

- Braccio di reazione
- Torque arm
- Drehmomentstütze
- Bras de réaction
- Brazo de reacción
- Braço de torção



### OPTIONAL

- Flange in uscita
- Output flanges
- Abtriebsflansche
- Brides de sortie
- Bridas en salida
- Flange de saída



### OPTIONAL

- Albero lento semplice / doppio
- Single / double output shaft
- Einseitige / doppelseitige Abtriebswelle
- Arbre petite vitesse simple/double
- Eje lento simple/doble
- Eixo de saída simples/duplo