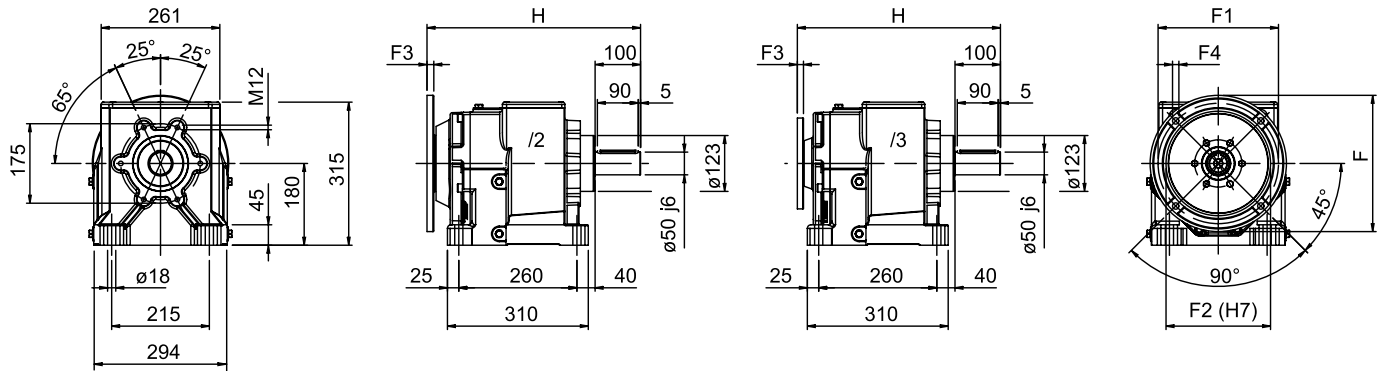


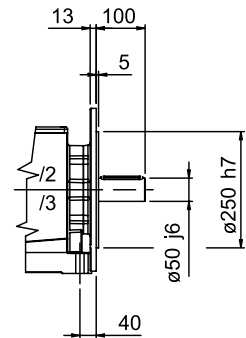
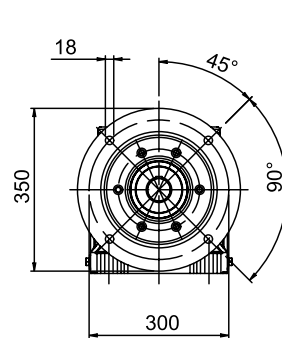
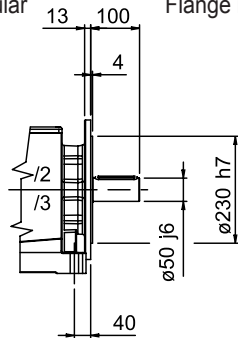
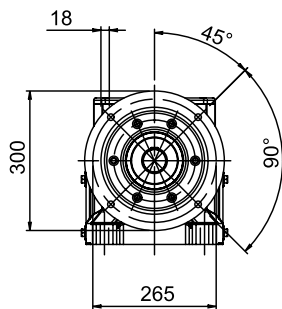
MNHL 50 PAM



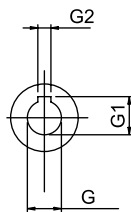
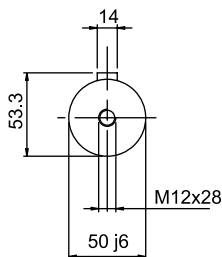
Flangia Riportata
Bride modulaire

Modular Flange
Brida modular

Eingebauter Flansch
Flange modular



Albero uscita
Output shaft
Abtriebswelle
Arbre sortie
Eje salida
Eixo saída



Albero entrata
Input shaft
Antriebswelle
Arbre entrée
Eje entrada
Eixo entrada

	G	G1	G2	F	F1	F2	F3	F4	H
50/2 - 50/3									
/2 ... 71 B5	24	27,3	8	200	165	130	15	11,5	467
/2F ... 71 B5									
/2 ... 80 B5	28	31,3	8	250	215	180	15	14	470
/2F ... 80 B5									
/2 ... 90 B5	38	41,3	10	300	265	230	15	14	470
/2F ... 90 B5									
/2 ... 100-112 B5	42	45,3	12	350	300	250	19	18	500
/2F ... 100-112 B5									
/2 ... 132 B5	11	12,8	4	140	115	95	7,5	9	447
/2F ... 132 B5									
/3 ... 56 B5	14	16,3	5	160	130	110	12	9	453
/3F ... 56 B5									
/3 ... 63 B5	19	21,8	6	200	165	130	13,5	11	447
/3F ... 63 B5									
/3 ... 71 B5	24	27,3	8	200	165	130	13,5	11	447
/3F ... 71 B5									
/3 ... 80 B5	28	31,3	8	250	215	180	16	13	450
/3F ... 80 B5									

i	50/2 PAM			
3,07	100	112	132	160
6,67	100	112	132	160
4,87	100	112	132	160
5,47	100	112	132	160
6,51	100	112	132	160
6,72	100	112	132	160
7,78	100	112	132	160
8,94	100	112	132	160
10,34	100	112	132	160
12,07	100	112	132	160
14,25	100	112	132	160
16,04	100	112	132	160
18,22	100	112	132	160
20,9	100	112	132	160
24,31	100	112	132	160
28,76	100	112	132	160
31,54	90	100	112	132
38,77	90	100	112	
43,59	90	100	112	
49,93	90	100	112	

i	50/3 PAM			
60,43		80*	90*	100*
70,83		80*	90*	100*
83,55	71*	80*	90*	100*
95,1	71*	80*	90*	100*
108,97	71*	80*	90*	100*
125,93	71*	80*	90*	
147,12	71*	80*	90*	
174,36	71*	80*	90*	
197,3	71*	80*	90*	
225,64	71*	80*		
261,54	63	71*	80*	
308,48	63	71*	80*	
368,53	63	71*	80*	
414,1	63	71*	80*	
464,96	63	71*	80*	

(* PAM disponibile anche in B14; per eventuali informazioni sugli ingombri, rivolgersi al nostro ufficio tecnico.

(* Available also in PAM B14; further information on the outline can be required to our technical department.

(* Bereit auch mit PAM B14; für Informationen über Abmessungen, bitte, wenden Sie sich an unsere Technisch Abteilung.

(* PAM disponible également en B14; pour d'éventuelles informations sur les encombrements, s'adresser à notre bureau technique.

(* PAM disponible también en B14; para posibles datos acerca de las dimensiones, consultar a nuestra oficina técnica.

(* PAM disponível também em B14; para eventuais informações sobre as dimensões, contate a nossa divisão técnica.