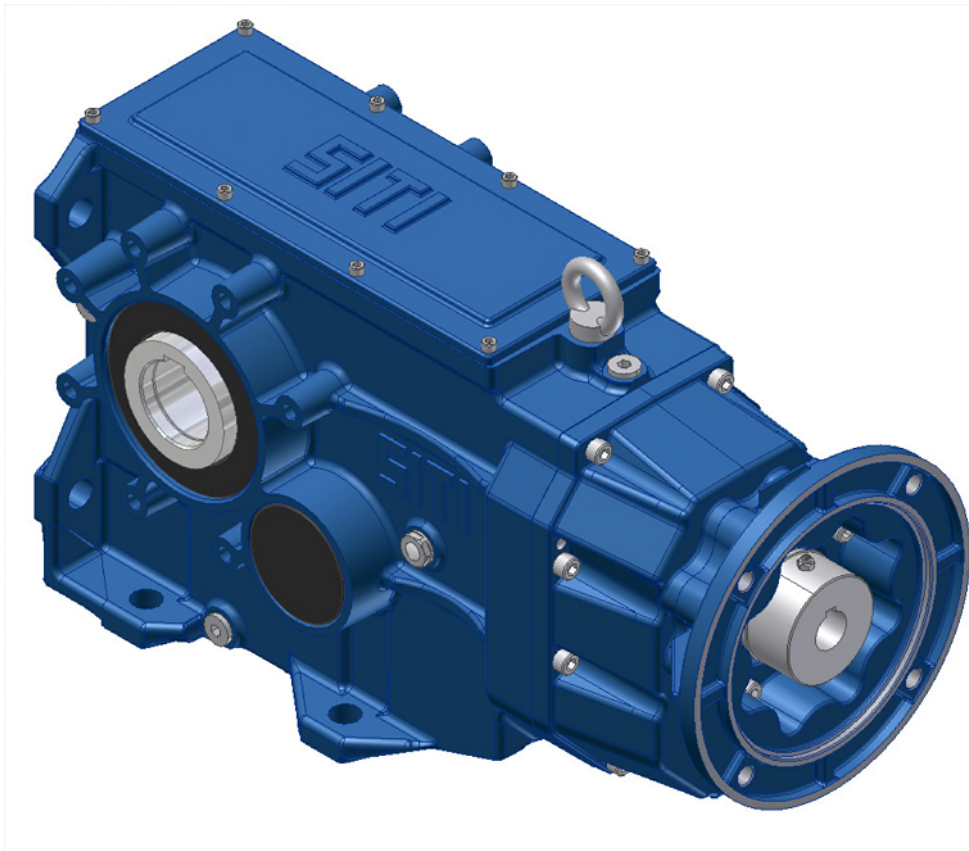
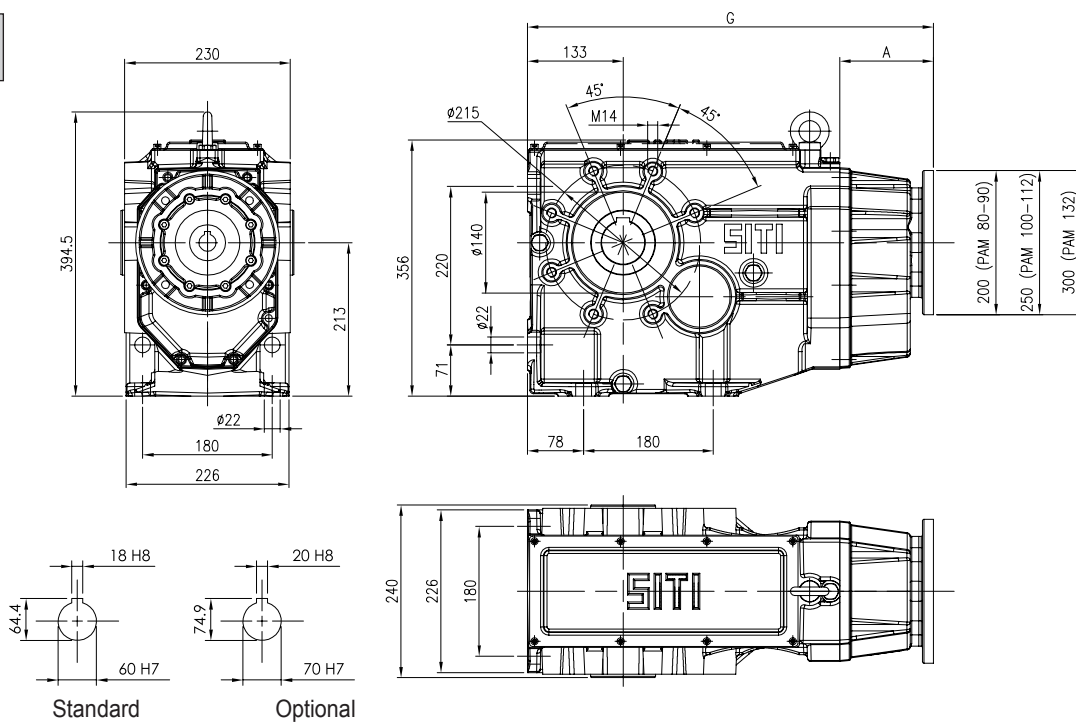


# BH 125

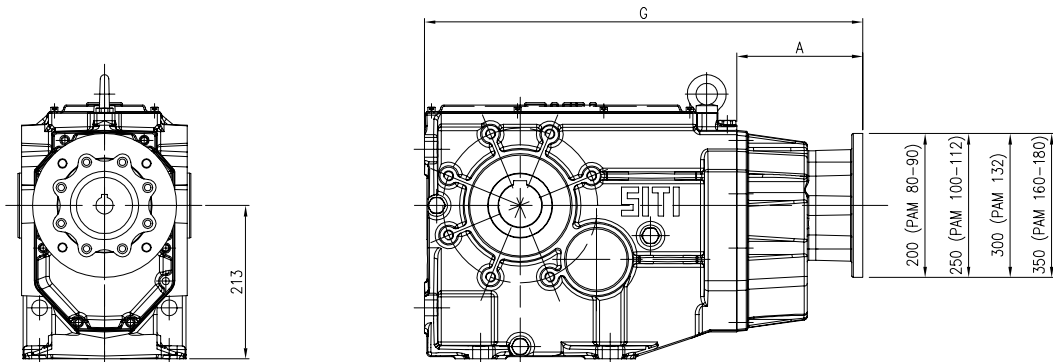


$$M_{2\max} = 3000 \text{ Nm}$$

## MBH 125



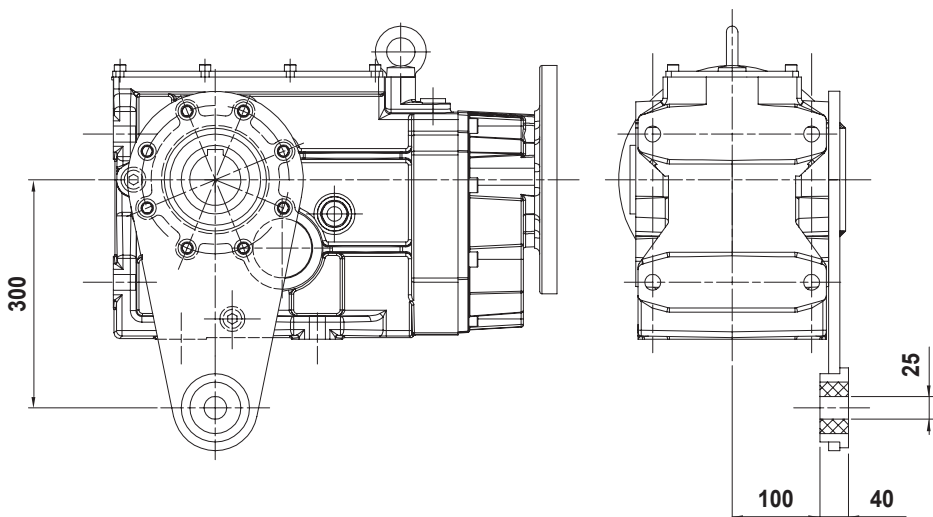
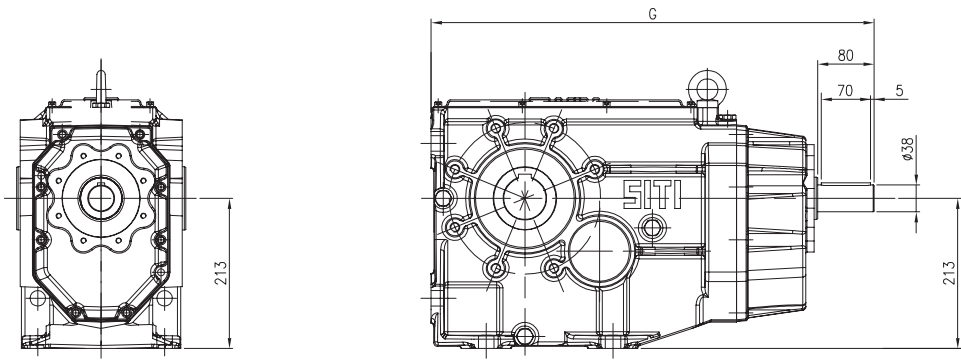
## MBHGC 125



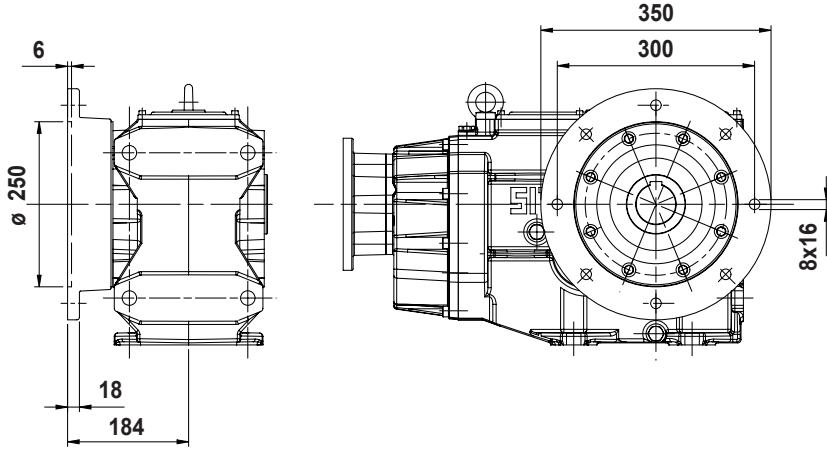
	A	G
BH 125		628,5
MBH125 PAM 80	130	563,5
MBH125 PAM 90	130	563,5
MBH125 PAM 100	130	563,5
MBH125 PAM 112	130	563,5
MBH125 PAM 132	130	563,5
MBHGC125 GR.80	175	608,5
MBHGC125 GR.90	175	608,5
MBHGC125 GR.100	175	608,5
MBHGC125 GR.112	175	608,5
MBHGC125 GR.132	210	643
MBHGC125 GR.160	240	673,5
MBHGC125 GR.180	240	673,5

i	MBH					MBHGC						
	80	90	100	112	132	80	90	100	112	132	160	180
6,96												
8,20												
9,70												
11,50												
13,93												
16,41												
19,40												
27,72												
31,55												
36,18												
41,91												
49,17												
58,65												
64,58												
72,65												
85,22												
101,67												
111,94												
138,67												
156,48												
181,21												
201,50												
226,30												

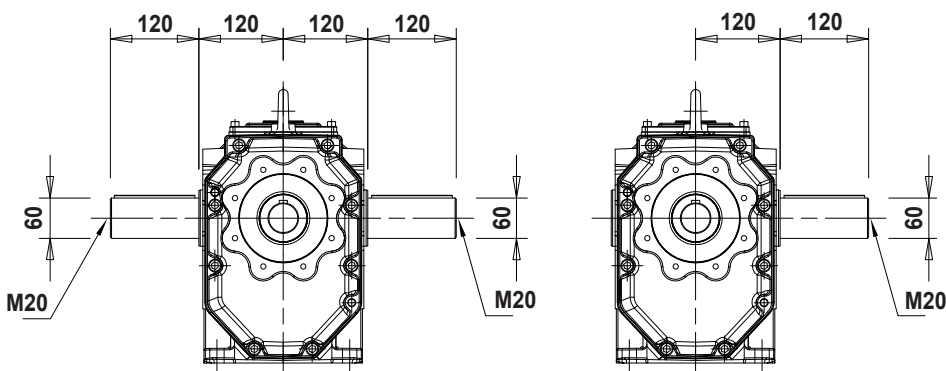
## BH 125



**OPTIONAL**  
 Braccio di reazione  
 Torque arm  
 Drehmomentstütze  
 Bras de réaction  
 Brazo de reacción  
 Braço de torção



**OPTIONAL**  
 Flange in uscita  
 Output flanges  
 Abtriebsflansche  
 Brides de sortie  
 Bidas en salida  
 Flange de saída



**OPTIONAL**  
 Albero lento semplice / doppio  
 Single / double output shaft  
 Einsetige / doppelseitige Abtriebswelle  
 Arbre petite vitesse simple/double  
 Eje lento simple/doble  
 Eixo de saída simples/duplo